

High Performance Quickfit Dowel for Multiple Wooden Materials



Quickfit TL5 'Full Metal Jacket'

- Effective in multiple wooden materials
- Strong and reliable joint
- High drilling tolerances
- Tool-free insertion

Quickfit TL5 'Full Metal Jacket'

High Performance Quickfit Dowel for Multiple Wooden Materials

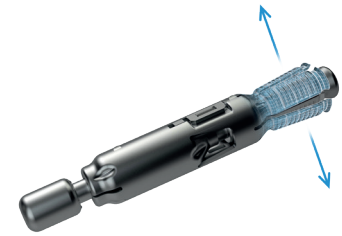
Effective performance in chipboard, solid wood and MDF

Optimal strength and effective performance in MDF, chipboard and solid wood

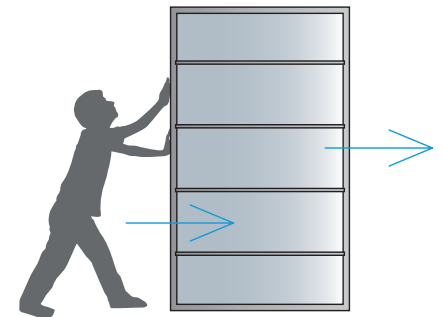


Strong and reliable joint

An expanding steel sleeve assures high resistance to torsion and dowel pull-out



A rigid cabinet construction which doesn't loosen through time, even at repeatable assembly



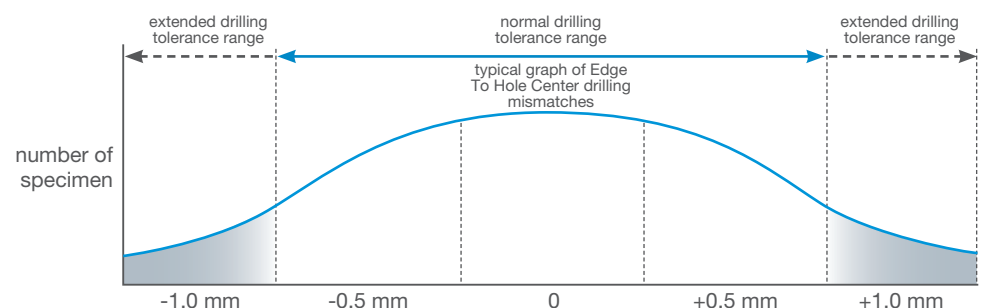
High drilling tolerances

An extended dowel head form works as a positive stop against cam and provides an ETHC tolerance of min. +/-1mm



ETHC=edge-to-hole centre

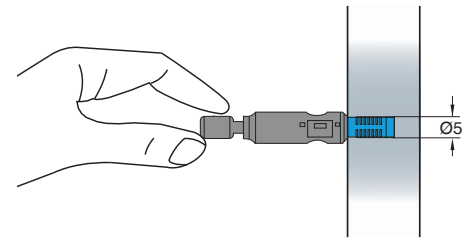
Fully tightened joint even at marginal inconsistencies of drilling and problems associated with the natural movement of wood panels



**Tool-free insertion
for 5mm dowel holes**

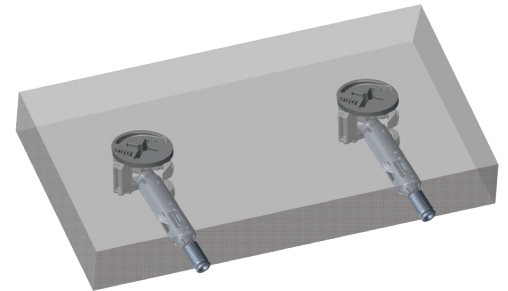
Quickfit TL5 reliably engages the 5mm dowel hole

It enables the usage of tool-less Quickfit dowel insertion technology across a wide range of applications

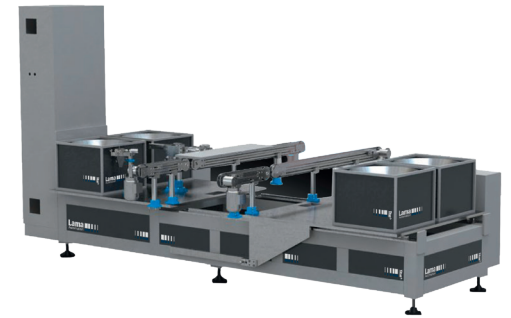


**50% less time to assemble
the cabinet at home**

When edge inserted the dowel engages the cam and remains securely positioned until the boards are locked together



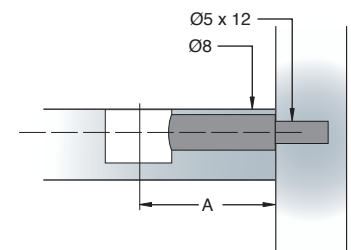
For maximum efficiency, the insertion process can be automated using Lama FastFit machine



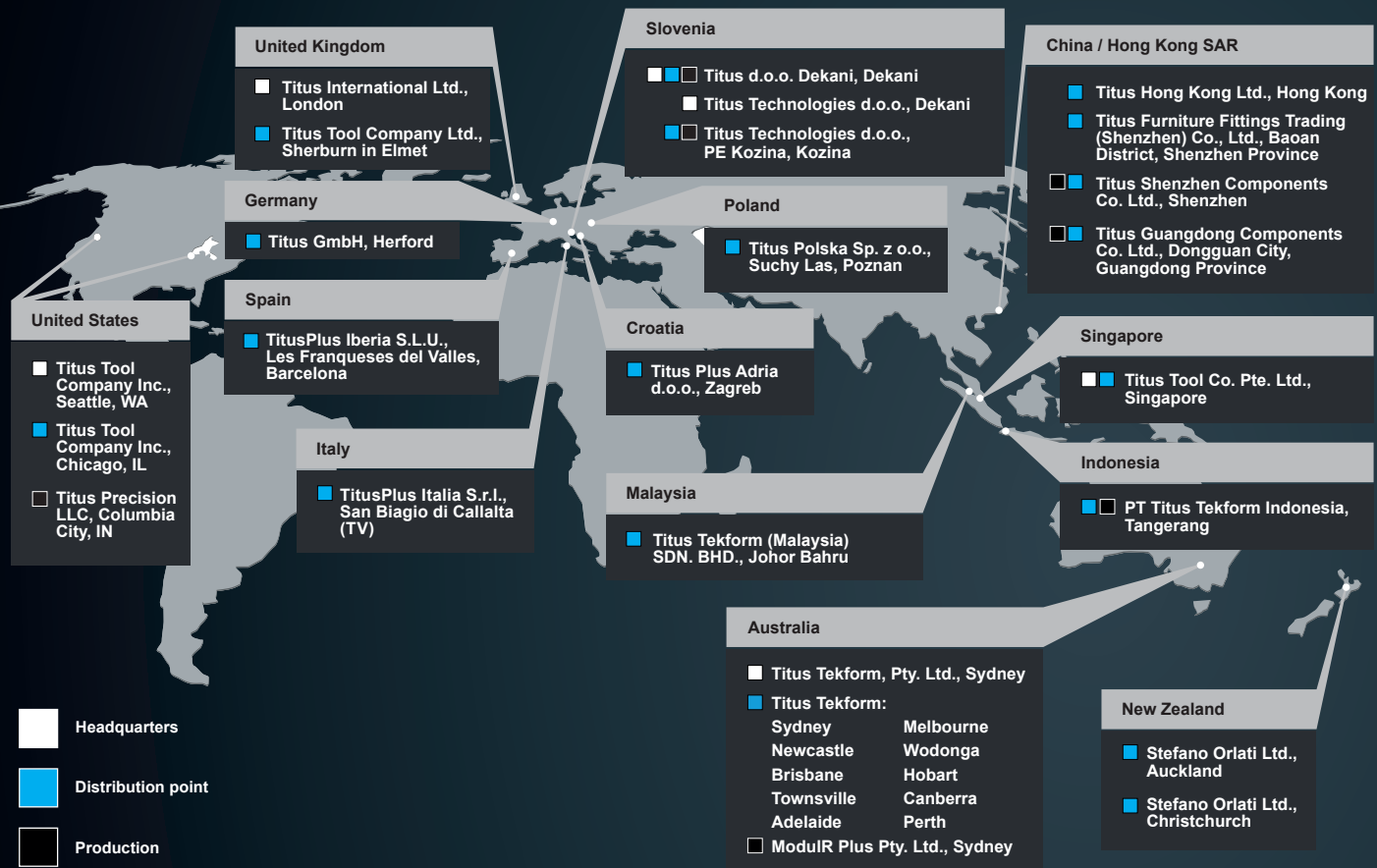
Fast and easy furniture assembly at home



**Technical and
mounting details**



Hole diameter	5mm
Length ETHC (edge-to hole- centre) -A	24mm, 34mm
Insertion type	tool-free only
Application	manual insertion, factory insertion
Cams	works only with Cam5000
Drilling specification	Hole diameter (face board) = Ø5mm Hole depth = min. 12.5mm Hole diameter (edge board) = Ø8mm



Europe

Titus d.o.o. Dekani

Dekani 5
SI-6271 Dekani
Slovenia
+386 5 6690 101
+386 5 6690 205 Fax
info@titusplus.com

Titus Technologies d.o.o.

Dekani 5
SI-6271 Dekani
Slovenia
+386 5 6690 422
technologies@titusplus.com

Titus Technologies d.o.o., PE Kozina

OIC Hrpelje 36
SI-6240 Kozina
Slovenia
+386 5 6690 422
technologies@titusplus.com

Titus Plus Adria d.o.o.

Ulica Kreše Golika 3
HR-10090 Zagreb
Croatia
+385 1 3323 033
+385 1 3323 233 Fax
croatia@titusplus.com

Titus Polska Sp. z o.o.

Ul. Stefańskiego 17 A
PL-62-002 Suchy Las/Poznań
Poland
+48 61 811 5402 Phone/Fax
+48 61 811 5684 Phone/Fax
+48 61 821 9362
poland@titusplus.com

TitusPlus Italia S.r.l.

Via Aquileia 9
Frazione Olmi
IT-31048 San Biagio di Callalta (TV)
Italy
+39 04 221 650 120
+39 04 221 650 136 Fax
italia@titusplus.com

TitusPlus Iberia SLU

C/ Luxemburg 16
ES-08520 Les Franqueses del Valles
Spain
+34 938 715 404
+34 938 605 498 Fax
iberia@titusplus.com

Titus GmbH

Lübberlindenweg 12
DE-32049 Herford
Germany
+ 49 5221 1024880
germany@titusplus.com

Titus Tool Company Ltd.

10 Blackburn Industrial Estate
Enterprise Way
Sherburn in Elmet
LS256NA
United Kingdom
+ 44 1977 682582
+ 44 1977 680481 Fax
uk@titusplus.com

America

Titus Tool Company Inc.

2800 156th Avenue SE
Suite 135
Bellevue, WA 98007
USA
+1 800 762 1616 Toll free
+1 425 746 2080
+1 425 746 2344 Fax
usa@titusplus.com

Titus Tool Company Inc.

11056 W. Addison Street
Franklin Park, IL 60131
USA
+1 800 762 1616 Toll free
+1 425 746 2080
+1 425 746 2344 Fax
usa@titusplus.com

Titus Precision LLC

900 W Connexion Way
Columbia City, IN 46725
USA
+1 260 244 6114
+1 425 746 2080
+1 425 746 2344 Fax
usa@titusplus.com

Australia and New Zealand

Titus Tekform Pty Ltd

83 Jedda Road
Prestons NSW 2170
Australia
+61 2 9286 0007
+61 2 9286 0074
info@titustekform.com.au
www.titustekform.com.au

Stefano Orlati Ltd

34 Waipareira Avenue
Henderson
Auckland
New Zealand
+64 9 837 0886
+64 9 837 8003 Fax
stefano-orlati@titusplus.com
www.stefano-orlati.co.nz

Asia

Titus Tool Co. Pte. Ltd.

5004 Ang Mo Kio Ave 5
Techplace II #04-01
Singapore 569872
Singapore
+65 6383 3922
+65 6383 3178 Fax
singapore@titusplus.com

Titus Guangdong

Components Co. Ltd.
Room 101, Building No. 1
No. 358 Daxing Road
Yangwu Village, Dalingshan Town
Dongguan City
Guangdong Province
China
+86 769 85659801 803
china@titusplus.com

Titus Shenzhen Components Co. Ltd.

1st Floor Building No. 2
Heng Changrong High-tech
Industrial Park
ShangNan South Road
Shangjiin Street
Bao'an District
Shenzhen City
Guangdong Province
China
+86 755 8348 0916
+86 8359 2676
china@titusplus.com

Titus Tekform Indonesia, PT

Taman Teknoblok L2 No. 7
Bumi Serpong Damai Sektor XI
15314 Tangerang
Indonesia
+62 21 70753578
+62 21 75873574 Fax
indonesia@titusplus.com

Headquarters

Titus International Ltd

28 Fitzroy Square
W1T 6DD London
United Kingdom
+44 20 8004 8083
info@titusplus.com
www.titusplus.com

Titus

info@titusplus.com | www.titusplus.com