

NEW

High Performance Quickfit Dowel for Multiple Wooden Materials



Quickfit TL5 **‘Full Metal Jacket’**

- Effective in multiple wooden materials
- Strong and reliable joint
- High drilling tolerances
- Tool-free insertion

Quickfit TL5 'Full Metal Jacket'

High Performance Quickfit Dowel for Multiple Wooden Materials

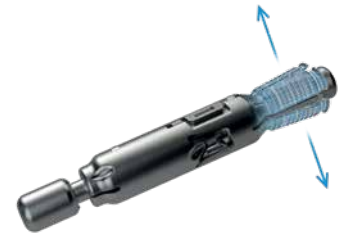
Effective performance in chipboard, solid wood and MDF

Optimal strength and effective performance in MDF, chipboard and solid wood

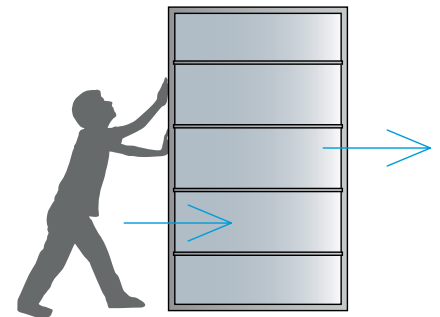


Strong and reliable joint

An expanding steel sleeve assures high resistance to torsion and dowel pull-out



A rigid cabinet construction which doesn't loosen through time, even at repeatable assembly



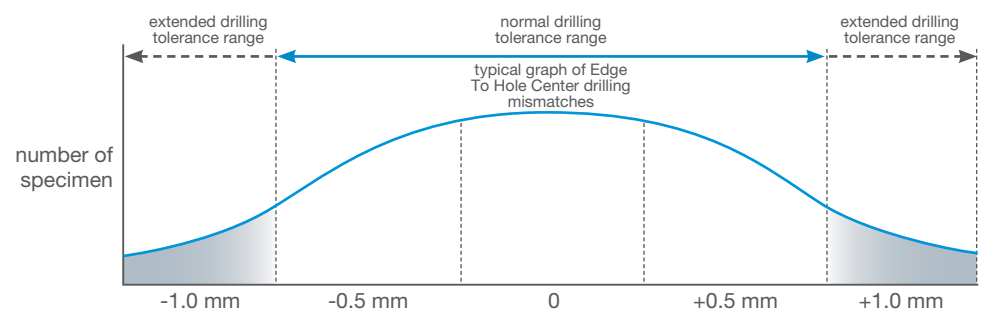
High drilling tolerances

An extended dowel head form works as a positive stop against cam and provides an ETHC tolerance of min. +/-1mm



ETHC=edge-to-hole centre

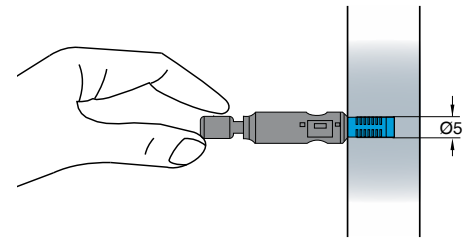
Fully tightened joint even at marginal inconsistencies of drilling and problems associated with the natural movement of wood panels



**Tool-free insertion
for 5mm dowel holes**

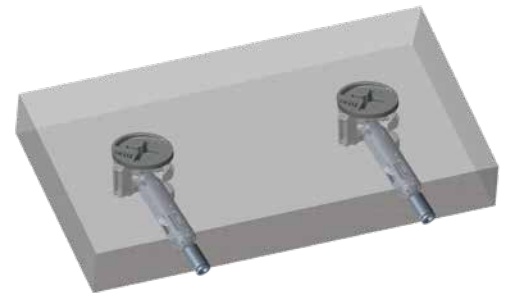
Quickfit TL5 reliably engages the 5mm dowel hole

It enables the usage of tool-less Quickfit dowel insertion technology across a wide range of applications



**50% less time to assemble
the cabinet at home**

When edge inserted the dowel engages the cam and remains securely positioned until the boards are locked together



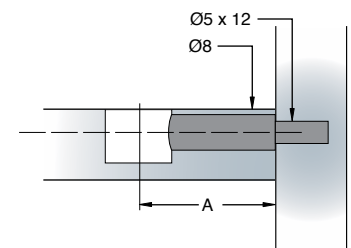
For maximum efficiency, the insertion process can be automated using Lama FastFit machine



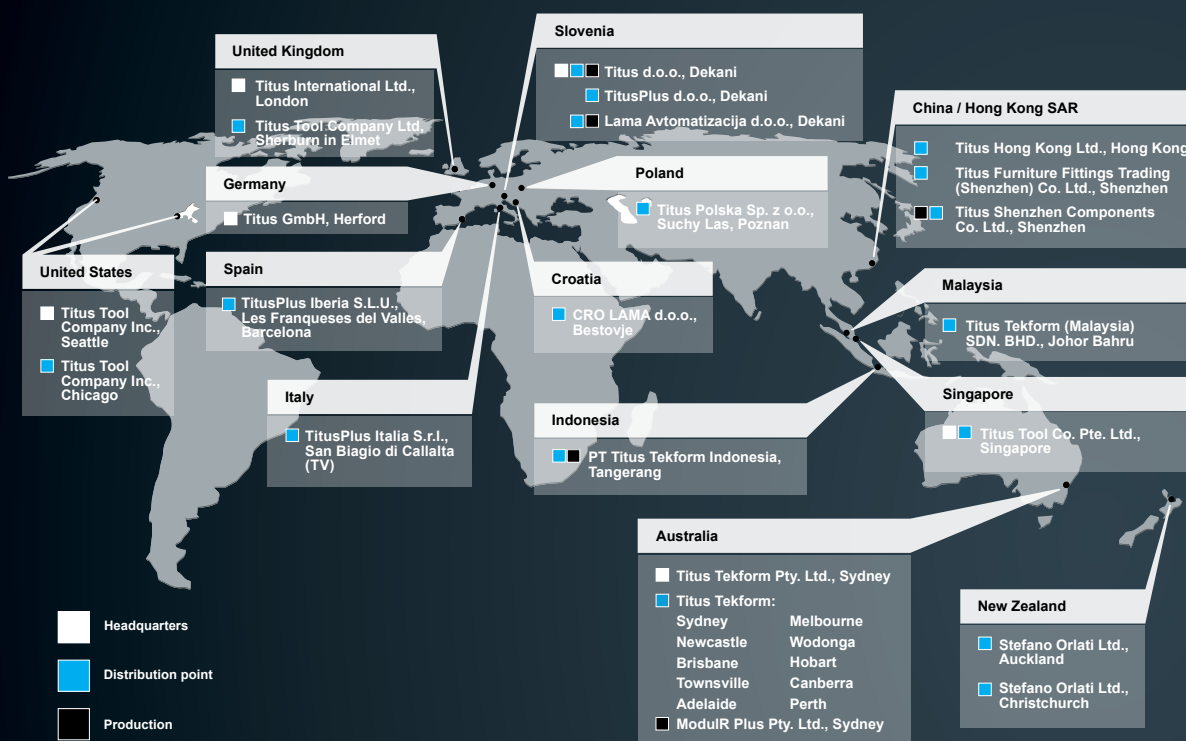
Fast and easy furniture assembly at home

CAF Quick & Easy
Consumer Assembly Friendliness

**Technical and
mounting details**



Hole diameter	5mm
Length ETHC (edge-to hole- centre) -A	24mm, 34mm
Insertion type	tool-free only
Application	manual insertion, factory insertion
Cams	works only with Cam5000
Drilling specification	Hole diameter (face board) = Ø5mm Hole depth = min. 12.5mm Hole diameter (edge board) = Ø8mm



Europe

Titus d.o.o. Dekani

Dekani 5
 SI-6271 Dekani
 Slovenia
 +386 5 6690 213
 +386 5 6690 205 Fax
 info@titusplus.com

Titus Technologies d.o.o.

Dekani 5
 SI-6271 Dekani
 Slovenia
 +386 5 6690 000
 technologies@titusplus.com

Titus Tool Company Ltd.

10 Blackburn Industrial Estate
 Enterprise Way
 Sherburn in Elmet
 LS256NA
 United Kingdom
 +44 1977 682582
 +44 1977 680481 Fax
 uk@titusplus.com

CRO LAMA d.o.o.

Rakitska 10a
 Rakitje
 HR-10437 Bestovje
 Croatia
 +385 1 3323 033
 +385 1 3323 233 Fax
 croatia@titusplus.com

Titus Polska Sp. z o.o.

ul. Stefańskiego 17 A
 PL-62-002 Suchy Las/Poznan
 Poland
 +48 61 811 5402 Phone/Fax
 +48 61 811 5684 Phone/Fax
 +48 61 821 9362
 poland@titusplus.com

TitusPlus Italia S.r.l.

Via Aquileia 9
 Frazione Olmi
 IT-31048 San Biagio di Callalta (TV)
 Italy
 +39 04 221 650 120
 +39 04 221 650 136 Fax
 italia@titusplus.com

TitusPlus Iberia S.L.U.

C/ Luxemburg 16
 ES-08520 Les Franqueses del Valles
 (Barcelona)
 Spain
 +34 938 715 404
 +34 938 605 498 Fax
 iberia@titusplus.com

Titus GmbH, Herford

Lübberlindenweg 12
 DE-32049 Herford
 Germany
 + 49 5221 102488-0
 germany@titusplus.com

America

Titus Tool Company Inc.

2800 156th Avenue SE
 Suite 135
 Bellevue, WA 98007
 USA
 +1 800 762 1616 Toll free
 +1 425 746 2080
 +1 425 746 2344 Fax

Titus Tool Co. Inc.

11056 W. Addison Street
 Franklin Park, IL 60131
 USA
 +1 800 762 1616 Toll free
 +1 425 746 2080
 +1 425 746 2344 Fax
 usa@titusplus.com

Australia and New Zealand

Titus Tekform Pty Ltd

83 Jedda Road
 Prestons NSW 2170
 Australia
 +61 2 9286 0007
 +61 2 9826 0074 Fax
 www.titustekform.com.au
 info@titustekform.com.au

Stefano Orlati Ltd

34 Waipareira Avenue
 Henderson
 Auckland
 New Zealand
 +64 9 837 0886
 +64 9 837 8003 Fax
 www.stefano-orlati.co.nz
 stefano-orlati@titusplus.com

Asia

Titus Tool Co. Pte. Ltd.

5004 Ang Mo Kio Ave 5
 Techplace II #04-01
 Singapore 569872
 Singapore
 +65 6383 3922
 +65 6383 3178 Fax
 singapore@titusplus.com

Titus (Shenzhen) Components Co. Ltd.

1st Floor Building No. 2
 Heng Changrong High-tech Industrial
 Park
 ShangNan South Road
 Shangjin Street
 Baoan District Shenzhen Province
 China
 +86 755 8348 0916
 +86 8359 2676 Fax
 china@titusplus.com

Titus Tekform Indonesia, PT

Taman Teknoblok L2 No. 7
 Bumi Serpong Damai Sektor XI
 Indonesia
 +62 21 7587 3578
 +62 21 7587 3574 Fax
 indonesia@titusplus.com

Headquarters

Titus International Ltd
 28 Fitzroy Square
 London
 W1T 6DD
 United Kingdom
 info@titusplus.com

www.titusplus.com
 info@titusplus.com

Titus

info@titusplus.com | www.titusplus.com