

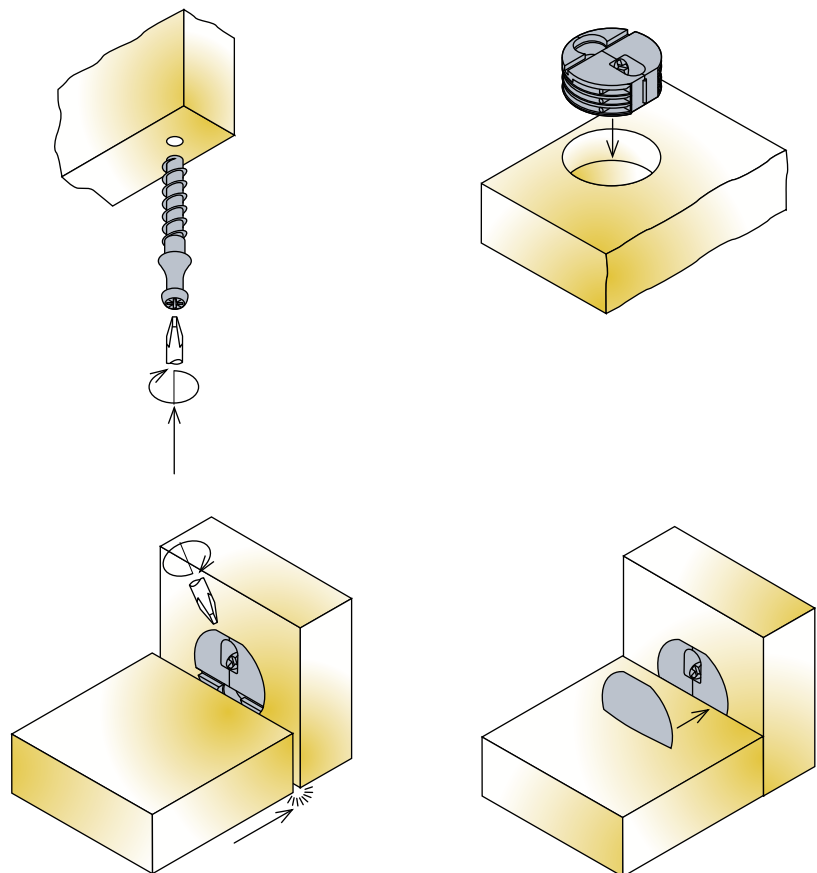
System 3

Fittings for Face and Edge Boring

System Features

Titus System 3 is a two component rigid face and edge drilled fastening with half turn to fasten. System 3 offers almost full concealment and wide tolerances in use.

- Automatic or in-factory placement
- Pre-location pin ensures ease of assembly
- Less than one turn of a screwdriver to fasten
- Shelf edge installation of pin means maximum shelf cut size tolerance
- Can be used on 12mm shelf panels
- No loose parts for maximum convenience in RTA
- Drawer front fixing, cabinet construction

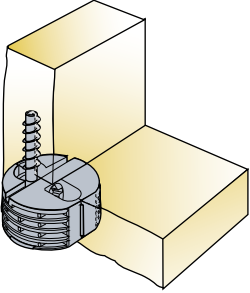

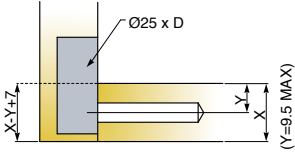

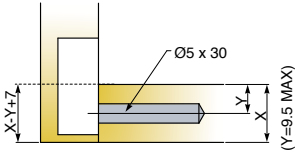

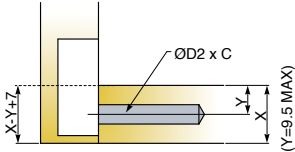



System 3

Fittings for Face and Edge Boring

Concealed Housing

- One turn locking system reduces assembly time, both in the factory and home
- Pre-assembly feature for consumer convenience
- Choice of dowels to suit drilling
- Hi-Lo screw feature for faster insertion

Technical and mounting details		C	D	D2					
		Drilling length for dowel	Drilling depth for housing	Drilling diameter for dowel thread	Item number	Black	Zinc plated	Dark brown	Yellow passivate
 <p>Technical and mounting details</p>									
Housing assembly   <p>X, Y - depends on board thickness</p> <p>2500 Pcs Made of plastic or zinc, plastic</p>		12.5			03118 →	835		831	877
		Other colours on request							
Screw dowel Ø5   <p>X, Y - depends on board thickness</p> <p>1000 Pcs Made of zamak</p>		30		5	03168 →		883		
Screw dowel Ø3   <p>X, Y - depends on board thickness</p> <p>5000 Pcs (03180) 4000 Pcs (03181) 1000 Pcs (03190) Made of steel</p>		11		3.75	03181 →				881
		9		3	03180 →				881
		25		3	*03090 →		883		
		*American market only							
Cover cap  <p>15000 Pcs Made of plastic</p>					03150 →	835			877