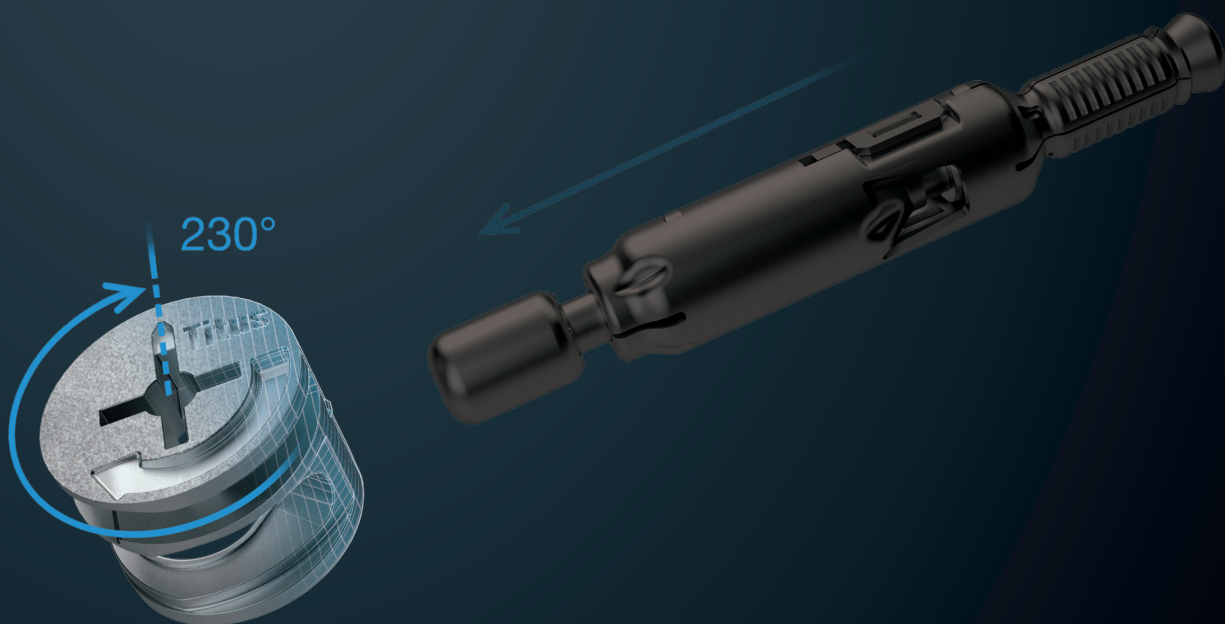


Superior Strength
for Greater
'Confidence in Use'



Titus New Generation Cam5000

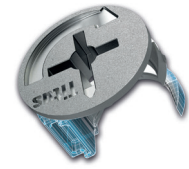
- Highly resistant joint
- Great dowel pull-up
- Effective performance
in a wider tolerance range
- Smooth tightening action

Cam5000

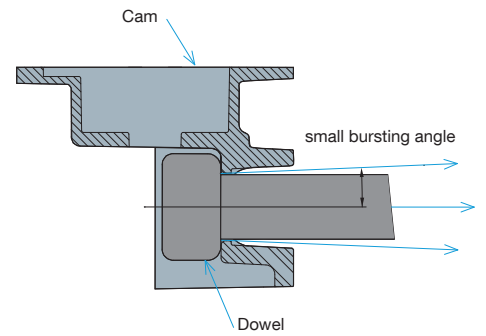
Superior Strength for Greater 'Confidence in Use'

Highly resistant joint for stronger cabinet construction

Reinforced cam evenly engages the hole and prevents cam tilting.

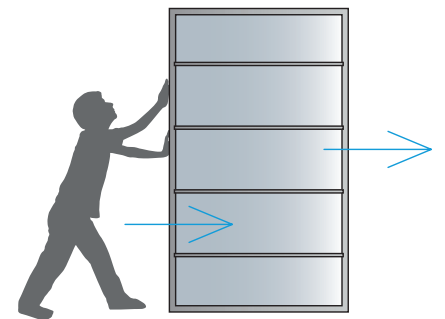


Balanced force distribution prevents cam bursting while tightening.



Increased joint resistance enables effective performance in wider tolerance range.

The cabinet construction remains strong even with multiple assemblies.



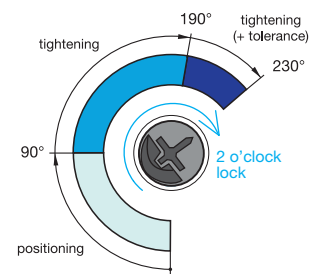
Reliable and comfortable locking

Improved linear cam profile ensures smooth tightening action and greater dowel pull-up

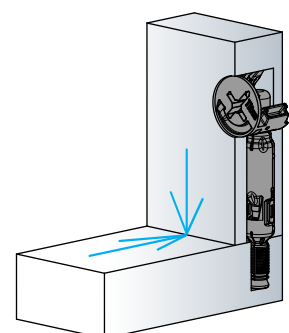


Smooth and noticeable locking at 2 o'clock guarantees:

- tight joints
- always-right tightening at home assembly
- strong and rigid cabinet construction



Highly resistant joint with no gaps between panels



Optimal performance with all Titus dowels

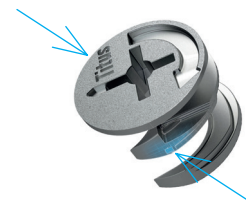
Quickfit TL, Quickfit, Combi, end, double ended, angled and other screw-in dowels



Cam5000 retains all the standard features of Titus cam family

A wealth of experience from four decades of designing and providing cam & dowel solutions

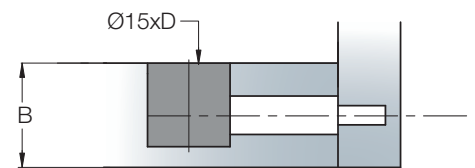
Cam retaining pips ensure the cam is held in panel position prior to assembly



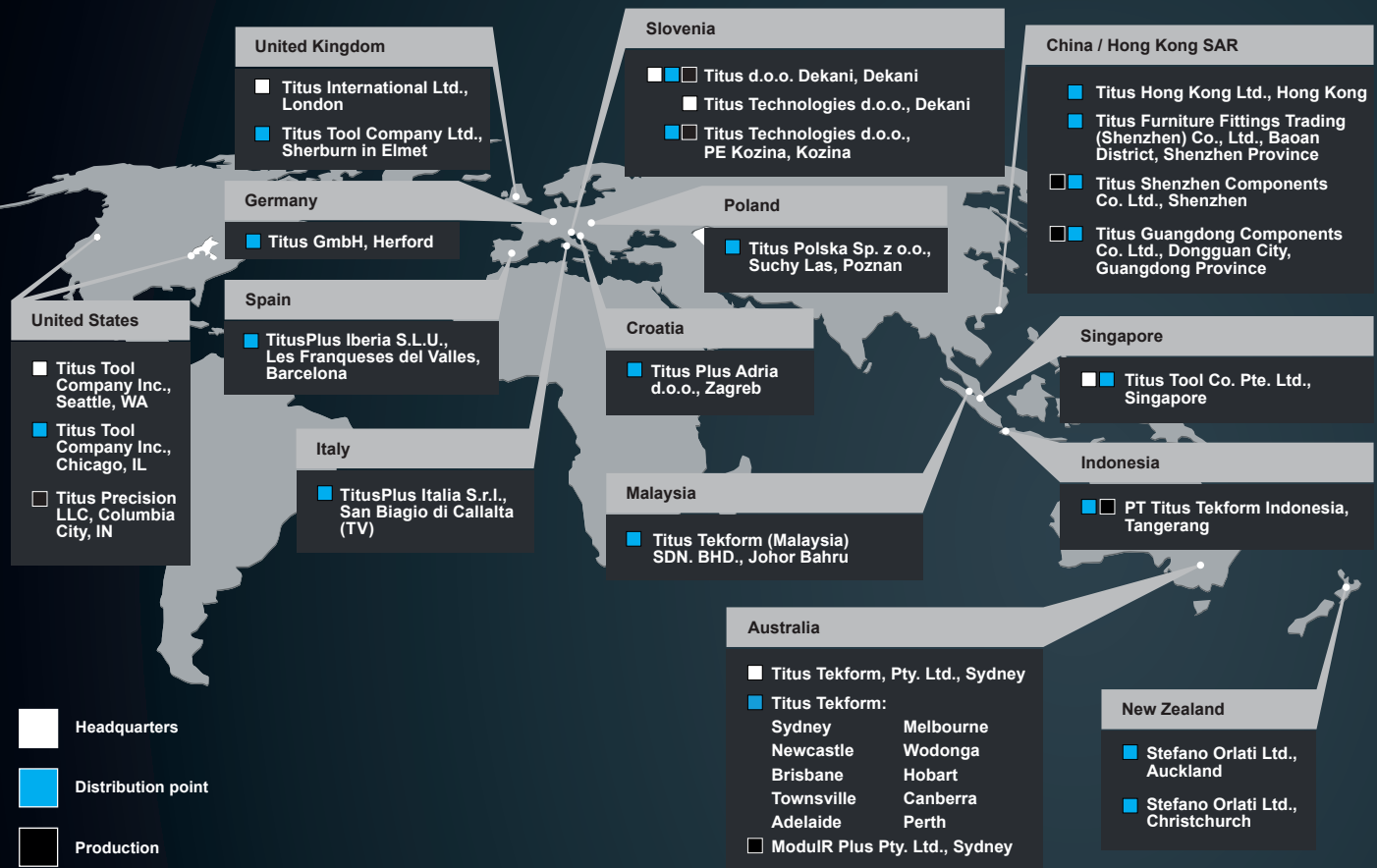
Titus 'Klix' locking system ensures the engagement of the interlocking teeth providing vibration proof joint and rigid construction that will not loosen in transit or service.



Technical and mounting details



Drilling	15mm
Panel thickness B	12/13mm, 15/16mm, 18/19mm
Drilling depth D	10.5mm, 12.5mm, 14mm
Drive type	PZ2, PZ2 + HEX
Application	manual insertion, factory insertion
Dowels	Quickfit TL, Quickfit, Combi, end, double ended, angled and other screw-in dowel



Europe

Titus d.o.o. Dekani

Dekani 5
SI-6271 Dekani
Slovenia
+386 5 6690 101
+386 5 6690 205 Fax
info@titusplus.com

Titus Technologies d.o.o.

Dekani 5
SI-6271 Dekani
Slovenia
+386 5 6690 422
technologies@titusplus.com

Titus Technologies d.o.o., PE Kozina

OIC Hrpelje 36
SI-6240 Kozina
Slovenia
+386 5 6690 422
technologies@titusplus.com

Titus Plus Adria d.o.o.

Ulica Kreše Golika 3
HR-10090 Zagreb
Croatia
+385 1 3323 033
+385 1 3323 233 Fax
croatia@titusplus.com

Titus Polska Sp. z o.o.

Ul. Stefańskiego 17 A
PL-62-002 Suchy Las/Poznan
Poland
+48 61 811 5402 Phone/Fax
+48 61 811 5684 Phone/Fax
+48 61 821 9362
poland@titusplus.com

TitusPlus Italia S.r.l.

Via Aquileia 9
Frazione Olmi
IT-31048 San Biagio di Callalta (TV)
Italy
+39 04 221 650 120
+39 04 221 650 136 Fax
italia@titusplus.com

TitusPlus Iberia SLU

C/ Luxemburg 16
ES-08520 Les Franqueses del Valles
Spain
+34 938 715 404
+34 938 605 498 Fax
iberia@titusplus.com

Titus GmbH

Lübberlindenweg 12
DE-32049 Herford
Germany
+ 49 5221 1024880
germany@titusplus.com

Titus Tool Company Ltd.

10 Blackburn Industrial Estate
Enterprise Way
Sherburn in Elmet
LS256NA
United Kingdom
+ 44 1977 682582
+ 44 1977 680481 Fax
uk@titusplus.com

America

Titus Tool Company Inc.

2800 156th Avenue SE
Suite 135
Bellevue, WA 98007
USA
+1 800 762 1616 Toll free
+1 425 746 2080
+1 425 746 2344 Fax
usa@titusplus.com

Titus Tool Company Inc.

11056 W. Addison Street
Franklin Park, IL 60131
USA
+1 800 762 1616 Toll free
+1 425 746 2080
+1 425 746 2344 Fax
usa@titusplus.com

Titus Precision LLC

900 W Connexion Way
Columbia City, IN 46725
USA
+1 260 244 6114
+1 425 746 2080
+1 425 746 2344 Fax
usa@titusplus.com

Australia and New Zealand

Titus Tekform Pty Ltd

83 Jedda Road
Prestons NSW 2170
Australia
+61 2 9286 0007
+61 2 9286 0074
info@titustekform.com.au
www.titustekform.com.au

Stefano Orlati Ltd

34 Waipareira Avenue
Henderson
Auckland
New Zealand
+64 9 837 0886
+64 9 837 8003 Fax
stefano-orlati@titusplus.com
www.stefano-orlati.co.nz

Asia

Titus Tool Co. Pte. Ltd.

5004 Ang Mo Kio Ave 5
Techplace II #04-01
Singapore 569872
Singapore
+65 6383 3922
+65 6383 3178 Fax
singapore@titusplus.com

Titus Guangdong

Components Co. Ltd.
Room 101, Building No. 1
No. 358 Daxing Road
Yangwu Village, Dalingshan Town
Dongguan City
Guangdong Province
China
+86 769 85659801 803
china@titusplus.com

Titus Shenzhen Components Co. Ltd.

1st Floor Building No. 2
Heng Changrong High-tech
Industrial Park
ShangNan South Road
Shangjiin Street
Bao'an District
Shenzhen City
Guangdong Province
China
+86 755 8348 0916
+86 8359 2676
china@titusplus.com

Titus Tekform Indonesia, PT

Taman Teknoblok L2 No. 7
Bumi Serpong Damai Sektor XI
15314 Tangerang
Indonesia
+62 21 70753578
+62 21 75873574 Fax
indonesia@titusplus.com

Headquarters

Titus International Ltd

28 Fitzroy Square
W1T 6DD London
United Kingdom
+44 20 8004 8083
info@titusplus.com
www.titusplus.com

Titus

info@titusplus.com | www.titusplus.com